

Panasonic

Portable CD-R/RW Drive

Operating Instructions

Model No. **KXL-RW21A**



This manual contains the information on handling the drive.
Please carefully read this manual and keep the documentation in a safe place for future reference.

Thank you for purchasing the Panasonic Portable CD-R/RW Drive KXL-RW21A.

The serial number of this unit may be found on the label located at the bottom of the unit. Write down this number below and keep this book along with your proof of purchase to serve as a permanent record of your purchase or for future reference. For warranty service you may be required to show your purchase records.

MODEL NO. **KXL-RW21A** NAME OF DEALER _____

SERIAL NO. _____ DATE OF PURCHASE _____

WARNING

- The power source voltage of the AC adaptor is listed on the nameplate. Plug the supplied AC adaptor only into an outlet with proper voltage.
- To prevent fire or shock hazard, do not expose this product to rain or any type of moisture.

CAUTION

- When you use this equipment with the supplied AC adaptor, the main socket-outlet should be near the equipment and should be easily accessible.
- To prevent the interface connector from static electricity damage, before you touch it, discharge any static electricity from your hands by touching a grounded metal surface, such as the screw on the plate cover of an electric outlet.

CAUTION FOR LASER

This product utilizes a laser.

Use of control, adjustment or performance of procedures other than those specified herein may result in hazardous radiation exposure.

Do not open covers and do not repair yourself. Refer servicing to qualified personnel.

Laser diode properties

Material	GaAIAs
Laser output	Less than HHS and IEC 60825-1 Class 1 Limit
Wavelength	785 nm

WARNING

- In no event will Kyushu Matsushita Electric Co., Ltd. be liable for any loss or damages to the customer's property or facilities, lost profits, lost revenue, repair costs, interruption of business, incurred expenses, inconveniences, or other incidental or consequential damages arising out of the use of or inability to use any product. Furthermore, for all cases, any compensation paid out will never exceed the original purchase price of the product.
- Please backup (copy) all important data as protection against data loss.

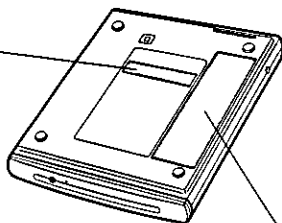
CAUTION

Use of this product to copy or reproduce copyrighted materials may be prohibited by law and/or by restrictions imposed by the copyright owner.

Before copying or reproducing any materials, you should obtain or have obtained the permission of the copyright owner.

CLASS 1 LASER PRODUCT

* Except for the United States.



CAUTION	INVISIBLE LASER RADIATION WHEN OPEN. AVOID EXPOSURE TO BEAM.
ATTENTION	RAYONNEMENT LASER INVISIBLE EN CSA D'OUVERTURE.
	EXPOSITION DANGEREUSE AU FAISCEAU.
VORSICHT	UNSICHTBARE LASERSTRAHLUNG, WENN ABDECKUNG GEÖFFNET.
	NICHT DEM STRAHL AUSSETZEN.
ADVARSEL	USYNLIG LASERSTRÅLING VED ÅBNING. UNDGÅ UDS/ETTELSE FOR STRÅLING.
ADVARSEL	USYNLIG LASERSTRÅLING NÅR DEKSEL ÅPNES. UNNGÅ EKSPONERING FOR STRÅLEN.
VARNING	OSYNLIG LASERSTRÅLNING NÅR DENNA DEL ÄR ÖPPNAD. STRÅLEN ÄR FARLIG.
VARO!	NÄKYMÄTÖN AVATTAESSA OLET ALTTIINA LASERSÄTEILYLLE, ÄLÄ KATSO SÄTEESEN.

FOR USERS IN THE UNITED STATES ONLY

This equipment has been tested and found to comply with the limits for a Class B digital device, pursuant to Part 15 of FCC Rules. These limits are designed to provide reasonable protection against harmful interference in a residential installation. This equipment generates, uses and can radiate radio frequency energy and, if not installed and used in accordance with the instructions, may cause harmful interference to radio communications.

However, there is no guarantee that interference will not occur in a particular installation. If this equipment does cause harmful interference to radio or television reception, which can be determined by turning the equipment off and on, the user is encouraged to try to correct the interference by one or more of the following measures:

- Reorient or relocate the receiving antenna.
- Increase the separation between the equipment and receiver.
- Connect the equipment into an outlet on a circuit different from that to which the receiver is connected.
- Consult the dealer or an experienced radio/TV technician for help.

The user may find the booklet "Something About Interference" available from FCC local regional offices helpful.

FCC Warning: To assure continued FCC emission limit compliance, the user must use only the provided shield interfacing cable when connecting to a host computer. Also, any unauthorized changes or modifications to this equipment would void the user's authority to operate this device.

FCC Declaration of Conformity

Trade Name : Panasonic

Model Number : KXL-RW21A

Responsible Party : Business Unit of Matsushita Electric Corporation of America
Tow Panasonic Way,
Secaucus, NJ 07094 U.S.A.

Telephone No. : 1-800-726-2797

This device complies with Part 15 of the FCC Rules.

Operation is subject to the following two conditions : (1) This device may not cause harmful interference, and (2) this device must accept any interference received, including interference that may cause undesired operation.

- Microsoft, Windows and Windows NT are registered trademarks of Microsoft Corporation in the United States and/or other countries.
- B's Recorder GOLD and B's CLiP are registered trademarks of B.H.A. Co., Ltd.
- Photo CD is a registered trademark of Eastman Kodak Company.
- IBM is a registered trademark of International Business Machines Corporation.

All other brands and product names are trademarks or registered trademarks of their respective companies.

Permission is granted from Microsoft Corporation to use Microsoft® Windows® Screen Shots.

Specifications given in this Operating Instruction are subject to change without notice.

End-User License Agreement

THIS IS A LEGAL AGREEMENT BETWEEN YOU AND PANASONIC. CAREFULLY READ ALL THE TERMS AND CONDITIONS OF THIS AGREEMENT PRIOR TO OPENING THE PACKET OF SOFTWARE PROGRAM. OPENING THE PACKET INDICATES YOUR ACCEPTANCE OF THESE TERMS AND CONDITIONS. If you do not agree to these terms and conditions, return the unopened packet and the other components of the Panasonic product to the place of purchase and your money will be refunded. No refunds will be given for product that have an opened packet or missing components.

1. COPYRIGHT:

Panasonic has the right to license or has been granted to license the enclosed software program ("SOFTWARE"), developed and copyrighted by Kyushu Matsushita Electric Co., Ltd. or its licensor ("Licensor"). You acknowledge that you are receiving only a LIMITED LICENSE TO USE the SOFTWARE and related documentation, and that you shall obtain no title, ownership nor any other rights in or to the SOFTWARE and related documentation, all of which title and rights shall remain with Licensor and Panasonic.

2. LICENSE:

(1) You have the non-exclusive right to use the one copy of the SOFTWARE on a single computer used by single user. Installation of the SOFTWARE on a network server for the purpose of distribution to one or more other computers shall not be granted in this Agreement. (2) You may not copy, reproduce, or permit to be copied or reproduced, the SOFTWARE or related documentation for any purpose, except that you may either (a) make a reasonable quantity of copies of the SOFTWARE solely for backup or archival purposes, or (b) transfer the SOFTWARE to a single hard disk, provided that you keep the original solely for backup or archival purposes. All other copies of the SOFTWARE are in violation of this Agreement. (3) You may not rent or lease the SOFTWARE, but you may transfer your right under this License Agreement on a permanent basis, provided that you transfer this Agreement, all copies of the SOFTWARE, all related documentation and your Panasonic product, and the recipient thereof agrees the terms of this Agreement. (4) You may not reverse engineer, decompile or disassemble the SOFTWARE, except that in European Union and European Free Trade Association, you may have the limited right to reverse engineer, decompile or disassemble the SOFTWARE solely to the extent specifically permitted by the terms and conditions of Article 6 of the European Community's Directive for the Legal Protection of Computer Programs, OJL 122/42 (17 May 1991). (5) You may not use, copy, modify, alter, or transfer the SOFTWARE, or any copy thereof, in whole or in part, except as expressly provided in this Agreement.

3. TERM:

This license is effective until terminated. You may terminate this Agreement at any time by destroying the SOFTWARE and related documentation and all copies thereof. This license will also terminate if you fail to comply with any term or condition of this Agreement. Upon such termination, you agree to destroy all copies of the SOFTWARE and related documentation.

4. LIMITED WARRANTY:

Within ninety (90) days of your receipt of the SOFTWARE, Panasonic warrants that the storage media on which the SOFTWARE are furnished is free from defect in materials and workmanship under normal use, and that it will repair or at its option replace any defective media at no charge to you, provided that such defective media is returned to Panasonic within such ninety (90) days period.

5. LIMITATION OF LIABILITY:

EXCEPT AS STATED ABOVE, NEITHER PANASONIC, PANASONIC'S SUPPLIER MAKES OR PASSES ON TO YOU OR OTHER THIRD PARTY, ANY WARRANTY OR REPRESENTATION INCLUDING, BUT NOT LIMITED TO, THE IMPLIED WARRANTY OF MERCHANTABILITY AND FITNESS FOR A PARTICULAR PURPOSE. WITHOUT LIMITING THE GENERALITY OF THE FOREGOING, NEITHER PANASONIC NOR PANASONIC'S SUPPLIER WARRANTS THAT THE SOFTWARE WILL BE ERROR-FREE OR THAT IT WILL MEET YOUR REQUIREMENTS. NEITHER PANASONIC NOR PANASONIC'S SUPPLIER SHALL BE LIABLE FOR ANY DAMAGE SUFFERED BY YOU INCLUDING, BUT NOT LIMITED TO, CONSEQUENTIAL, INCIDENTAL SPECIAL OR PUNITIVE DAMAGES. THE ABOVE LIMITATIONS SHALL APPLY REGARDLESS OF THE FORM OF ACTION WHETHER IN CONTRACT, TORT (INCLUDING NEGLIGENCE), STRICT PRODUCT LIABILITY OR OTHERWISE, EVEN IF SUCH PARTY HAS BEEN ADVISED OF THE POSSIBILITY OF SUCH DAMAGES.

Features

■ **USB Interface is supported** *1

- The supplied USB interface supports the Hot Swap function.
Without turning off your computer, the USB cable can be inserted/removed.

■ **6X write/4X rewrite Portable CD-R/RW drive** *2

- Portable solution for 6X writing for CD-R media and 4X rewriting for CD-RW media under Windows 98, Windows 2000 and Windows Me.

■ **For both Notebook PC & Desktop PC**

- Easy Connection to Notebook PC & Desktop PC with included USB Cable.

*1 Cannot Guarantee to work with all vendors USB Hubs.

*2 Writing transfer rate may vary based on computer specifications.

Important:

- Please use CD-Rs with the marking below.



- Please use CD-ROMs with the marking below.



- Please use CD-RWs with the marking below.



- Please use audio CDs with the marking below.



Table of Contents

Before Use

Precautions	10
Accessories	12
Part Names	13

Preparation

MODE Switch Setting	15
Setting the Power Mode	15
System Requirements	16
Setup Your Computer	17
Confirmation of Windows version	17
Installing the device driver	18
Confirmation of the Setup	20
Viewing the "Help" File	20

Operation

Connection	21
Insertion of the USB Cable	21
Removal of the USB Cable	22
Inserting / Ejecting a Disc	24
Inserting a disc	24
Ejecting a disc	24
When you cannot eject a disc	25
Reading from a CD	26
Playing a CD-ROM	26
Playing an audio CD	26
Installing the Writing Software	27
Writing to a Media	30
How to write to a CD-R/CD-RW media ...	30
About CD-R/CD-RW media	31

Appendix

Maintenance	32
Troubleshooting	33
Specifications	36
Index	38

Before Use

Preparation

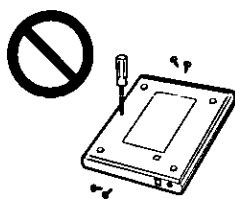
Operation

Appendix

Precautions

General

- Do not disassemble the drive and do not repair yourself, or it may cause electrical shock hazard, or a laser may damage your eyes.



- Do not store or use the drive in a dusty, humid, oily environment, or under damp or moist conditions.
- Do not turn up the volume too high, when using the headphones.
- Do not leave the drive in direct sunlight, near a heat source or especially in a hot automobile.
- Do not drop or jar the drive.

- When the drive has been moved from a cold place to warm place, it may damp or moist. Leave the drive for about 1 hour before using.

- Keep magnetic objects away from the drive.

- Do not insert any foreign metal object inside the drive.

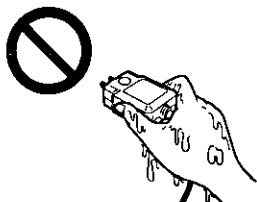
- Do not touch the lens.

- If noise is heard from radio or TV, move the drive 2 m (about 6 ft.) away from the radio or TV.

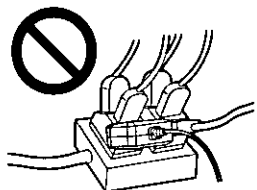
- Do not use any other USB cable with the drive, except the supplied USB cable.

AC Adaptor

- Do not plug-in or remove the AC adaptor using wet hands.



- Make sure the AC outlet or cord for the AC adaptor does not exceed the limit of their electrical ratings.

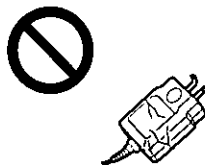


- Make sure the prongs of AC adaptor are fully inserted into the AC outlet.

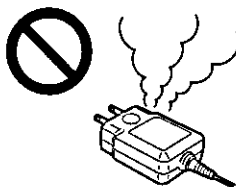
- Periodically remove the dust from the prongs of AC adaptor.

- Only use the AC adaptor indoors.

- Do not damage the AC adaptor by scratching or modifying, or bending its prongs.



- Do not use the AC adaptor under the following conditions.
 - when it is damaged
 - when there is smoke or strange smell
 - when an abnormal sound is heard



- Use only the supplied AC adaptor (see P. 21)

- Do not disassemble the AC adaptor.

Disc

- Do not scratch, smudge, write or label both surfaces of Disc.

- Do not leave the Disc in direct sunlight, near a heat source or especially in a hot automobile.

- Do not use chemicals or cleanser to clean Disc.

- Do not wipe Disc with dried hard cloth.

- Do not touch the data side (the side without the label) of Disc. Avoid finger prints and scratches while holding it.

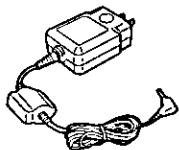
- Do not throw or bend Disc.

Accessories

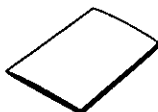
Make sure that the following accessories are included with the drive.
If anything is missing, contact your dealer immediately.

AC Adaptor

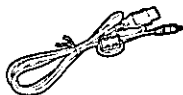
The Model No.
of AC adaptor is
written on the
bottom of the
drive.



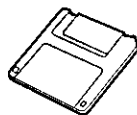
Operating Instructions
(this manual)



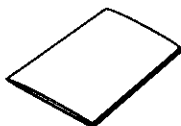
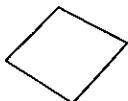
USB Cable



Setup Disk
[Before opening
the packet,
please read
the End-User
License
Agreement.]



Writing Software
[B's Recorder GOLD and B's CLiP]



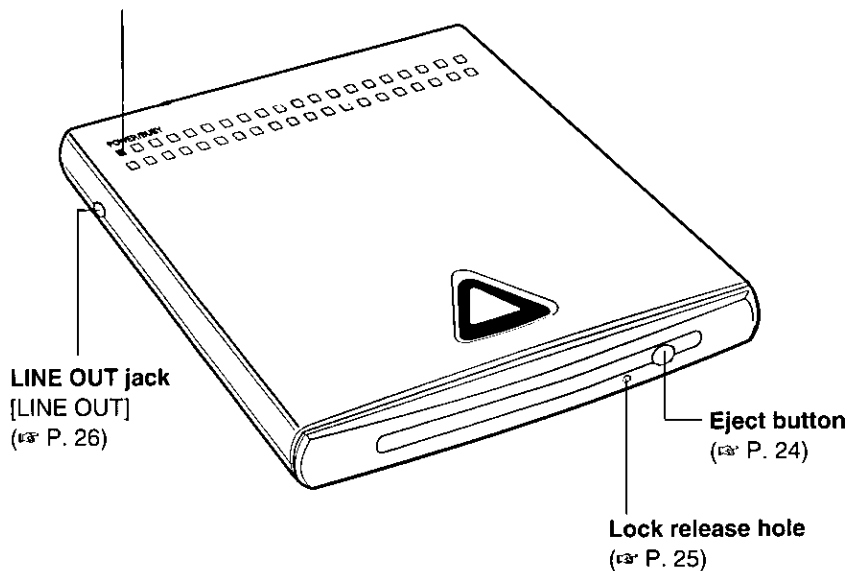
Part Names

■ Front / Right Side view

Before Use

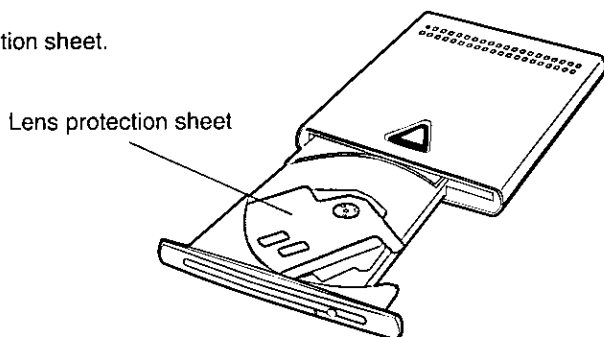
POWER / BUSY indicator (green or amber)

- lit (green): When the drive is on.
- blink (green): When data is being read from a media.
- lit (amber): When data is being written to a media.



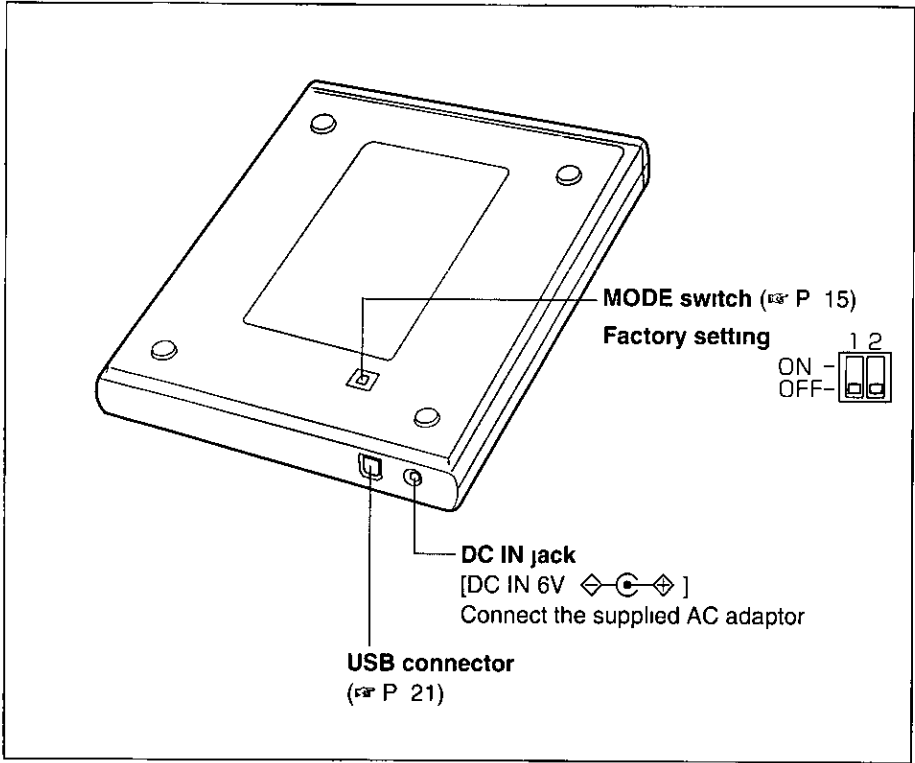
Note:

- Before using the drive, remove the lens protection sheet.



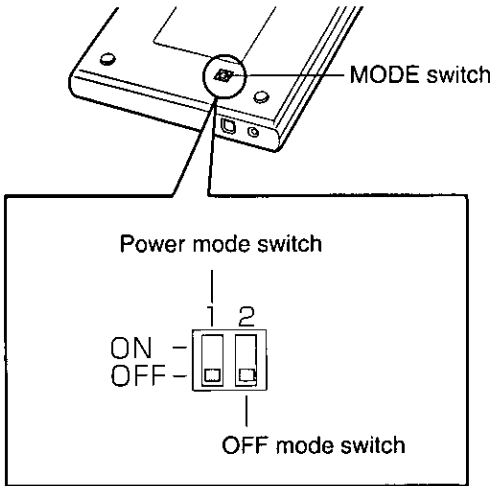
Part Names

■ Rear / Bottom view



MODE Switch Setting

Before setting the MODE switch, make sure that the drive is OFF.
MODE switch allows you to set "POWER MODE" (⇄ below).
Set the switch No.1 to ON or OFF using a pointed object like a pen.



Preparation

Note:

- Make sure that you use the drive with MODE switch No.2 set to OFF.

Setting the Power Mode

The factory setting is set to "OFF".

MODE Switch	Setting	Description
1	ON	No need to connect with your computer, the drive can be automatically turned on when the power is supplied from the AC adaptor.
	OFF	The power of the drive is automatically turned on/off when your computer is turned on/off.

System Requirements

Unit*<!--1</b-->	<ul style="list-style-type: none">• IBM PC/AT compatible Computer
CPU	<ul style="list-style-type: none">• Pentium® II 233 MHz or Better
Virtual memory	<ul style="list-style-type: none">• 32 MB or more (64 MB is recommended.)
Free disk space	<ul style="list-style-type: none">• 100 MB or more (800 MB is recommended.)
Operating System	<ul style="list-style-type: none">• Windows 98*2• Windows 2000*3• Windows Me*4

*1 It must have an USB port.

*2 Microsoft® Windows® 98 operating system (hereafter Windows 98)

*3 Microsoft® Windows® 2000 operating system (hereafter Windows 2000)

*4 Microsoft® Windows® Millennium Edition operating system (hereafter Windows Me)

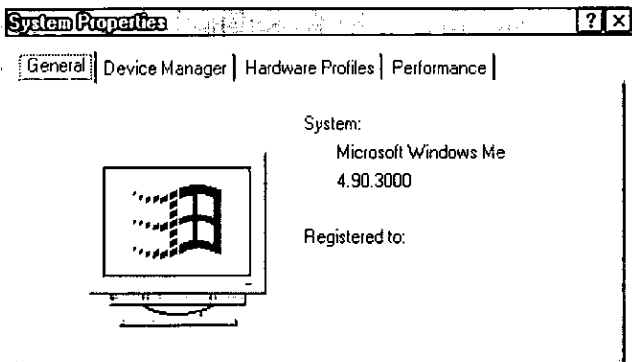
Setup Your Computer

Confirmation of Windows version

Right-click the “My Computer” icon, then click “Properties”.

The “System Properties” window appears.

Confirm at the System windows that there is “Microsoft Windows 98”, “Microsoft Windows 2000” or “Microsoft Windows Me” is installed.



Note:

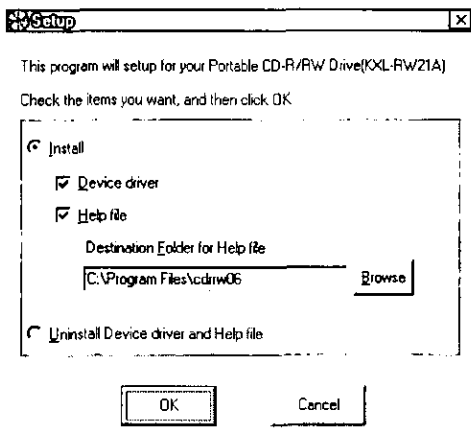
- This drive is not compatible with Windows 95 and Windows NT. If you wish to upgrade the Operation System from Windows 95 to Windows 98, you will need the latest USB driver. You should check with your PC manufacturer's support center or check their website for the latest USB driver.

Installing the device driver

Caution:

- Please use your computer with AC power to prevent the battery of your computer from running down while installing drive.

1. Insert the supplied Setup disk into your computer's floppy disk drive.
2. Double-click the "My computer" icon on the screen and then double-click "A:" (depending on floppy disk drive letter).
3. Double-click "Setup.exe".
The "Setup" window appears.

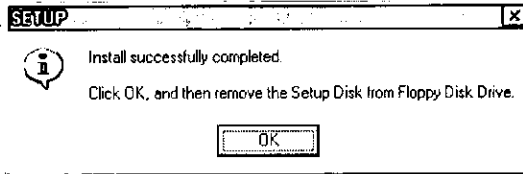


4. Click “Device driver” and then click **OK** .

Start installing and when it finishes next window appears like below.

Note:

- You can install the Help File, if you click on “Help file”.



5. Click **OK** and then remove the Setup disk.

6. Connect the drive to your computer.

Follow steps ② to ④ at “**Connection**”. (P. 21)

“CDRRW06 USB CD-R/RW device driver” and

“CDRRW06 USB CD-R/RW Adapter” will appear.

When the two of them disappear, the installation is complete.



Notes:

- The power of the drive is automatically turned on/off when the USB cable is inserted/removed to/from the drive and your computer.
- If the window does not appear at the Step 6 instead of the “Add New Hardware Wizard” window. Follow the instructions on the screen.

■ How to uninstall the Device Driver

Remove the USB cable from your computer and run the “Setup.exe” from the Setup disk. Click the “Uninstall Device driver and Help file” and click **OK** .

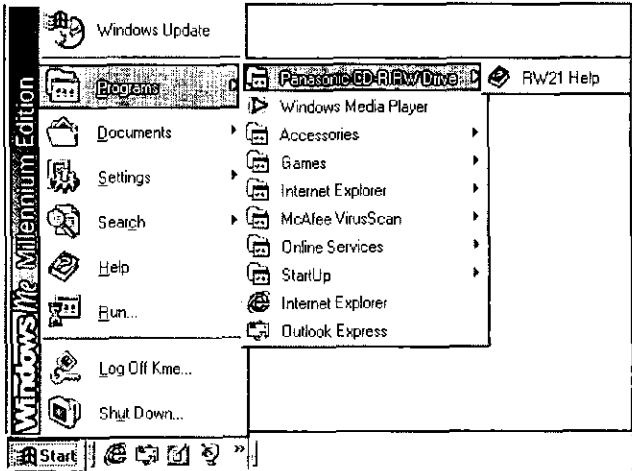
Confirmation of the Setup

1. Double-click the “My computer” icon, before inserting a disc in the drive.
 - If the “CD-ROM drive” icon () is displayed, the driver has been installed properly.
 - If the “CD-ROM drive” icon () is not displayed, please refer to the “Troubleshooting” section (P. 33-35).

Viewing the “Help” File

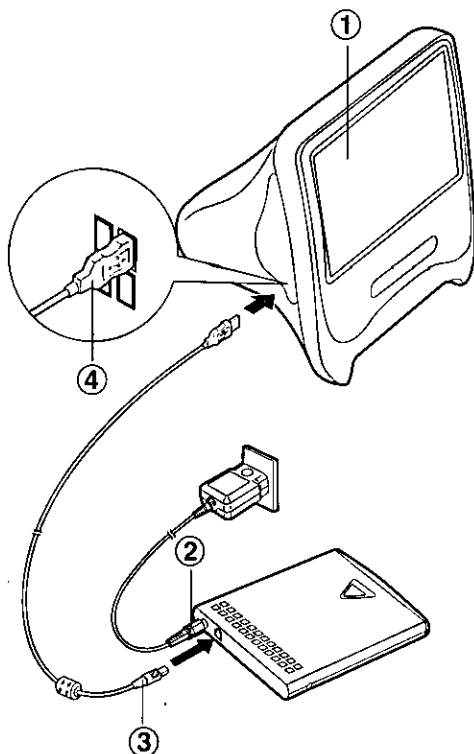
To install the “Help” file see page 19 step 4.

1. Click **Start** and then “Programs”.
2. Point to “Panasonic CD-R RW Drive” and then click “RW21 Help”.



Connection

Insertion of the USB Cable



- ① Start Windows 98 / Windows 2000 / Windows Me.
- ② Connect the AC adaptor to the drive.
- ③ Connect the supplied USB Cable to the USB Connector of the drive.
- ④ Connect other side of the supplied USB Cable to the USB Connector of your computer.

The drive turns on automatically and the POWER/BUSY indicator is lit.

Notes:

- The power of the drive is automatically turned on/off when your computer is turned on/off (when switch 1 is set to off).
- The power of the drive is automatically turned on/off, if the connector is connected/unconnected.

Notes

- Use only the supplied USB cable with the drive. Other cables could damage the drive or your computer.
- If the drive is not going to be used for an extended period, unplug the AC adaptor from the AC outlet to reduce power consumption. (Approximately 1 W of power is consumed when the drive is OFF and the AC adaptor is connected with 120 V outlet.)
- When you use the drive with the supplied AC adaptor, the AC socket-outlet should be near the drive and should be easily accessible.
- The AC adaptor is universal voltage. However, it is designed for use only in the country where it was purchased.
- Connect the USB cable directly to your computer's USB port. We cannot guarantee connection through a USB hub.

Removal of the USB Cable


■ *Users with Windows 98 / Windows Me*

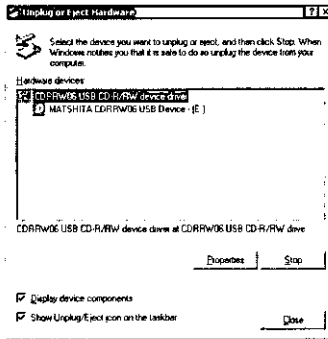
The supplied USB cable supports the Hot Swap function. With your computer turned on, you can insert/remove the USB cable safely without hardware damage, but when the POWER/BUSY indicator is blinking (green) or lit (amber), do not disconnect the USB cable.

Note

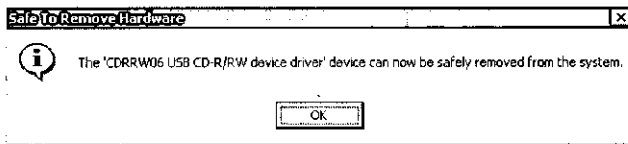
- If you use the "B's CLiP", right-click "B's CLiP" indicator on the task bar and select "Eject" on the pop-up menu, and then remove the USB cable.

■ Users with Windows2000

1. Double-click “Unplug / Eject” icon  on task bar.
The “Unplug or Eject Hardware” window appears.



2. Select “CDRRW06 USB CD-R/RW device driver” then click **Stop** .
3. Click **OK** .



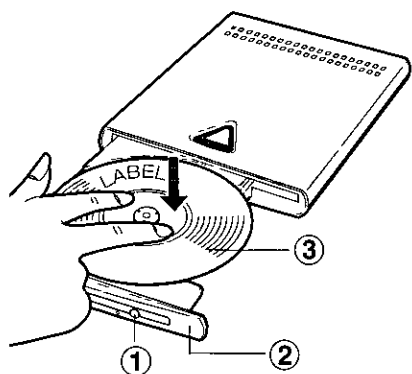
4. Click **OK** .
5. Now it is safe to remove the USB cable.

Caution:

- When the POWER/BUSY indicator is blinking (green) or lit (amber), observe the following precautions since data is being read from a media, or data is being written to a media.
 - Do not disconnect the USB cable.
 - Do not disconnect the AC adaptor.
 Otherwise, your computer may lock up. If this happens, restart your computer.

Inserting / Ejecting a Disc

Inserting a disc



- ① Press the eject button
- ② Pull out the tray completely
- ③ Place a disc onto the disc spindle
Press on the center of a disc until it locks onto the disc spindle

Caution

- Insert a disc firmly until it locks onto the spindle and then close the disc cover, or the disc may fall off the spindle and become damaged

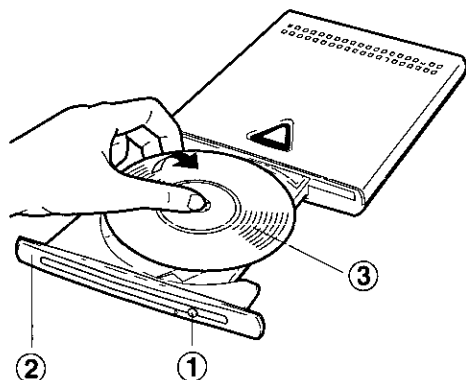
Ejecting a disc

Cautions

- Close the application, if you are using the drive with your computer and make sure that the POWER/BUSY indicator is not blinking (green) or lit (amber) before opening the disc cover
- While data is being written to a media, the tray is locked. You cannot eject the disc until data is written completely

Note

- If you use "B's CLiP", the tray is locked. Right click on the B's CLiP indicator on the taskbar and select "Eject" from the pop-up menu, then CD-RW disc will be ejected automatically



- ① Press the eject button
Depending on your software, the tray will come out automatically to select "Unplug / Eject" and click it
- ② Pull out the tray
- ③ Carefully remove the disc by pulling off spindle
Pressing on the disc spindle, lift the disc by holding its edge

When you cannot eject a disc

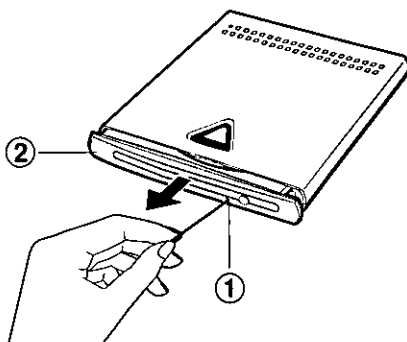
If the tray cannot be pulled out by pressing the eject button, unlock the tray by turning off the drive, then on again.

If you still cannot pull out the tray, perform the following steps.

Caution:

- Insure the POWER/BUSY indicator is not blinking (green) or lit (amber) before opening the disc cover, close any open application.

- ① Insert a pin (smaller than 1 mm in diameter) into the LOCK release hole (about 1/2 inch or 10 mm).
- ② Pull out the tray.



Reading from a CD

Playing a CD-ROM

To use a CD-ROM, refer to the manual or "README" file included on the CD-ROM

- Some types of CD-ROMs [game CD-ROM with audio track, CD Extra, Portfolio CD (Photo CD), etc] allow you to listen to the sound or music through the headphones/external speaker system (not supplied) with the LINE OUT jack of the drive. If LINE IN jack is available on the sound system of your computer, make a connection between the LINE IN jack of your computer and LINE OUT jack of the drive using an audio cable with \varnothing 3.5 mm mini stereo plug at both ends(not supplied), cable can be purchased from your computer dealer.

Playing an audio CD

You can operate an audio CD on your computer using an audio CD control software. Sound can be heard through the LINE OUT jack.

If your computer (Windows 98 / Windows 2000 / Windows Me) supports the digital audio feature, you can listen to the music through your computer. (For more detail, refer to your computer's manual.)

- To listen to the sound or music of an audio CD, connect the headphones/external speaker system (not supplied) with the LINE OUT jack of the drive. If the LINE IN jack is available on the sound system of your computer, make a connection between the LINE IN jack of your computer and LINE OUT jack of the drive using an audio cable with \varnothing 3.5 mm mini stereo plug at both ends(not supplied), cable can be purchased from your computer dealer.
- Normally an audio CD is inserted in the drive, automatically music starts. If it does not play automatically, start an audio CD software.

Installing the Writing Software

■ About supplied writing software

B's Recorder GOLD and B's CLiP are supplied as a writing software.
Please install the CD-ROM at the first.

- **Mastering Software** (B's Recorder GOLD)
To write to a CD-R and CD-RW media, the CD-R and CD-RW media can be read by most of CD-ROM drives.
- **Packet writing Software for CD-RW disc** (B's CLiP)
UDF allows you to write to a CD file by file, just like a floppy drive, where you Drag & Drop files.

Note:

- If you have installed an old version or other company's writing software, delete it first. There is a risk of an error of Packet writing Software, if you install with other company's Packet writing software.

■ How to Remove Application

If you do not have one installed, go to the next steps below.

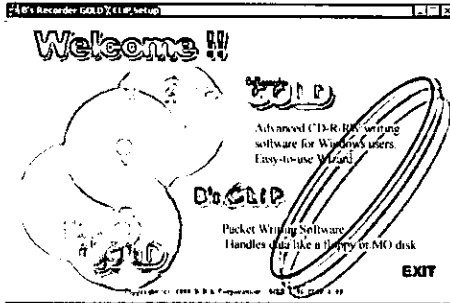
1. Point to "Settings" from **Start** and click "Control Panel" then double-click "Add/Remove Programs" icon.
"Add/Remove Programs" window appears.
2. Select one of the software on the list that appears then click "Add/Remove".
("Change/Remove" appears only for Windows 2000 user's.)
Confirmation of Removal message will appear.
3. Click **Yes**.
(Only for Windows 2000 users, depending on your software the Confirmation of Removal message might appear again, then follow the instructions on the screen.)
"Uninstall completed" message is displayed
4. Click **OK**.
After completing removal of application, close the Add/Remove Properties.
Please restart your computer.

Installing the Writing Software

How to Install

1. Insert the attached CD-ROM disc into the drive.

The installer automatically starts and "B's recorder GOLD CLip Setup" screen appears.



If it does not start automatically, open "My Computer" and double-click CD-ROM icon or double-click on "setup. exe" on CD.

2. Click either "B's Recorder GOLD" or "B's CLIP".

3. The "Install Program" will start, follow the instructions on the screen to complete the installation.

If a Serial number is requested, input the number below:

BT3W-AENL-8578-3911

4. After completing the Installation, restart your computer.

How to Use

■ For B's Recorder GOLD Users

To start "B's recorder GOLD" click and select "B's recorder GOLD" from Programs

■ For B's CLiP Users

"B's CLiP" will be started automatically when you start your computer (only CD-RW media is supported by B's CLiP)

If you insert media which was not used or was not packet formatted in the CD-R/RW drive then B's CLiP will be selected and started automatically

Note.

- If there are any uncertainties for installation and removal of writing software Refer to the attached quick guide or user's manual in the attached CD-ROM (Refer to the Manual* pdf file in the Doc folder of the GOLD and CLiP)
To read the user's manual, you need Adobe Acrobat Reader (Version over 4.0)
If there is not the Adobe Acrobat Reader in your computer, you can install from the attached CD-ROM (the ar500enu.exe file in the Acrobat folder of the GOLD)

Writing transfer rate

CD-R Media 2X, 4X, 6X

CD-RW Media 2X, 4X

Notes

- The CD-R media with 6X writing transfer rate should be written ISO9660 format (CD-ROM data) CD-DA (audio CD) maximum writing transfer rate is 4X
- Depending on your computer's abilities and environment, data cannot be written with the maximum transfer rate

Writing to a Media

How to write to a CD-R/CD-RW media

To write data to a CD-R/RW media, you need to install the supplied writing software in your computer.

Caution:

- Make sure that you install the supplied writing software, after setting up your computer. (*☞* P. 27.)

Before writing to CD-R/CD-RW media

- Please use your computer with AC power to prevent the battery from running down.
- Please do not use suspend mode, you might not be able to write data to a CD-R/CD-RW media.
- Do not close your Notebook computer's display, your computer's condition may change to the suspend mode.

Note:

- To write to the CD-R/CD-RW media properly, your computer must meet the System Requirements.
(Refer to the System Requirements *☞* P. 16.)

About CD-R/CD-RW media

- **CD-R Media** (*Compact Disc-Recordable Media*)

You can write data to the CD-R media only once.

Once the data is written, you can not erase the data, but if the data is written using Multisession mode and there is any space on the media, you can write data maximum 99 times.

- **CD-RW Media** (*Compact Disc-ReWritable Media*)

Data can be rewritten approximately 1000 times.

Caution:

- When you write to a CD-RW media at 4X, use the CD-RW media which supports 4X or faster.

■ About “B’s Recorder GOLD” and “B’s CLiP”

If you wish to version up the “B’s Recorder GOLD” and “B’s CLiP”, you can get latest information from homepage in internet.

Their online registration via:

WWW.bhacorp.com/registration/

Register your copy of BHA software today and receive the following:

- **Free technical support**
- **Free product update information**
- **Free information on new products and promotions**

For Support: support@bhacorp.com

For General Information: sales info@bhacorp.com

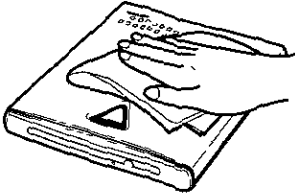
Maintenance

Caution

- Do not use solvents such as benzene, thinner, alcohol, record cleaners or anti-static spray

■ When the outside of drive is dirty:

Clean the outside of drive with a soft, dried cloth



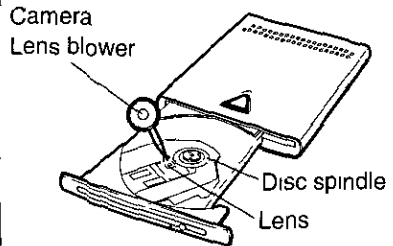
■ When a disc is dirty:

Wipe from the center to edge with a soft, dried cloth



■ When the lens is dirty:

Clean the lens with a commercial lens blower



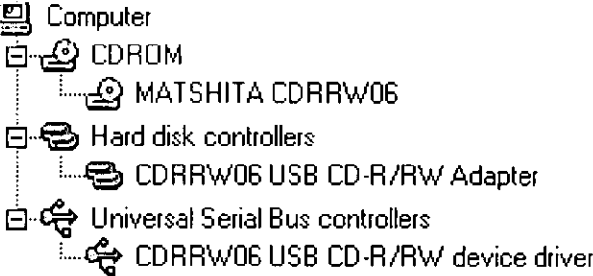
Troubleshooting









If trouble occurs, check the following points before returning the drive for service.

Trouble	Possible Cause	Solution
Your computer does not recognize the drive, or does not function properly.	The Auto Protect function of AC adaptor is working.	Disconnect the AC adaptor and connect it again after few minutes.
	Your computer has not been setup yet.	Set up your computer. (install the device drivers.) (☞ P. 18).
	The USB cable is not connected to the drive or to your computer properly.	Properly connect the USB cable (☞ P. 21).
	The USB cable pin is bent or broken.	Consult your dealer (or contact Panasonic Service Center at 1-800-PANA-SYS for users in continental United States).
	Operating System is not matched.	The drive works only with Windows 98 / Windows 2000 / Windows Me.

(continued)

Troubleshooting

Trouble	Possible Cause	Solution
<p>Your computer does not recognize the drive, or does not function properly.</p>	<p>Confirm the "Device Manager" to see if the drive has been installed correctly.</p> <p>How to view the Device Manager:</p> <ol style="list-style-type: none"> 1. Right-click the "My Computer" icon at the desktop and then click "Properties". 2. Double-click the "Device Manager" tab. <p>After installation, connect the USB cable to your computer and open the "Device Manager" window. You should have entries in the "Device Manager" similar to below.</p>  <p>If the "Device Manager" window does not appear like above or the symbol ① has been shown on a device then select it and click Remove. After that uninstall and then install the driver by the supplied Setup disk. After you have done all the steps but still cannot use this drive. Consult your dealer (or contact Panasonic Service Center at 1-800-PANA-SYS for users in continental United States).</p>	
<p>The drive, AC adaptor or interface card is warm.</p>		<p>This is not abnormal. If they become hot, consult your dealer.</p>

Trouble	Possible Cause	Solution
Data cannot be written to CD-R/CD-RW media properly.		Refer to the Quick Reference Guide.
Sound skips, or data cannot be read.	Disc is placed with the label side facing down.	Place the disc with the label side facing up (☞ P. 24).
	CD without  or  mark is used.	Use the CD marked with  or  .
	CD-R/CD-RW media without  or  mark is used.	Use the CD-R/CD-RW media marked with  or  .
	Disc or the lens of the drive may have become dirty.	Clean the disc or the lens of the drive (☞ P. 32).
	Dust such as a hair lay on the disc spindle.	Clean the disc spindle (☞ P. 32).
	Disc is damaged.	Replace with another disc.
	The drive or/and disc are damp or moist, because the drive or/and disc may have been moved from a cold place to a warm place.	Remove the disc from the drive and do not use the drive and disc for about 1 hour.
Sound of audio CD or CD-ROM cannot be played.	When your computer's sound system and your drive's LINE OUT jack is connected: The volume is set to the lowest level in the "Volume Control" or "Mute" is selected on the software control of the sound device.	Set the volume higher level, or cancel the "Mute" selection. For further information refer to your sound device manual.
The drive cannot be turned OFF.	Depending on computer, the USB port cannot be turned OFF, even the power is OFF.	Disconnect the USB cable.

Specifications

Operating Environment (under no damp or moist conditions):	Temperature: 5°C {41°F} to 35°C {95°F} Humidity: 20% to 85% RH
Storage Environment (Non-condensing):	Temperature: -20°C {-4°F} to 55°C {131°F} Humidity: 15% to 85 % RH
Dimensions:	138 (W) × 176 (D) × 21 (H) mm { 5.43"× 6.93" × 0.83" }
Mass {Weight}::	Approx. 460 g { 16.2 oz. }
Power Sources:	Supplied AC Adaptor*1: 100-240 V, 50/60 Hz
Interface:	USB
Buffer Size:	2 MB
Data Transfer Rate*2:	<ul style="list-style-type: none">● Reading: 900 kB/s(6X)● Writing: 300 kB/s (2X), 600 kB/s (4X), 900kB/s (6X)
Access Time:	150 ms typical (Test result by Panasonic test software)

*1 The Model No. of AC adaptor is written on the bottom of the drive.

*2 Performance may vary based on computer specifications.

Index

A

- AC adaptor (supplied) 11, 12
- Accessories 12
- Audio CD control software 26

B

- Buffer 36
- B's CLiP 12, 27, 29, 31
- B's Recorder GOLD 12, 27, 29, 31

C

- CD-ROM 26, 37
- Connecting AC adaptor (supplied) 21

D

- Disc 11, 24, 25
- DC IN jack 14
- Device driver 18

E

- Eject button 13, 24
- Ejecting a disc 24
- End-User License Agreement 6, 7

F

- Features 8

I

- Inserting a disc 24
- Insertion of the USB cable 21

L

- LINE OUT jack 13, 26
- LOCK release hole 13, 25

M

- Maintenance 32
- MODE switch 14, 15

P

- Part Names 13
- Playing an audio CD 26
- POWER mode 15
- Precautions 10

R

- Removal of the USB cable 22

S

- Setup disk 12, 18
- Specification 36

T

- Troubleshooting 33-35

U

- USB cable 12, 21, 22, 37

W

- Windows 98 16, 21, 22
- Windows 2000 16, 21, 23
- Windows Me 16, 21, 22

This product is designed for use only in the country where it was purchased